

# Reflection Question for Discussion on Options for Parish Vision Statement

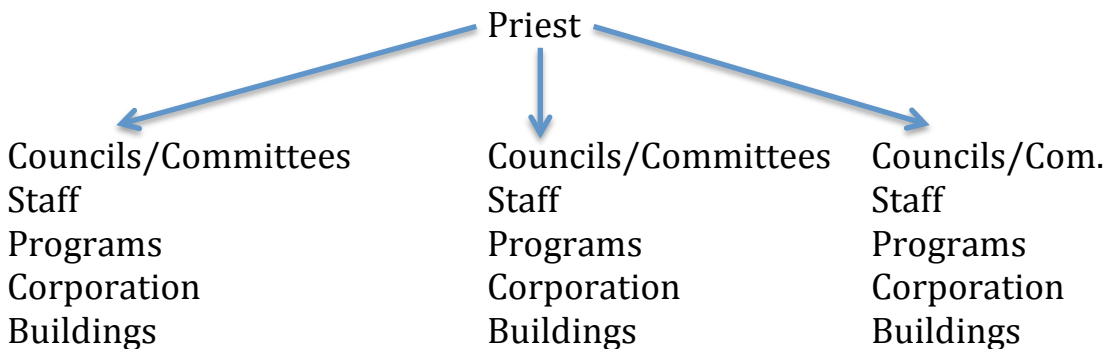
1. What model for organizing our parishes would best serve our purposes at this time? The following models were adapted from Pastoring Multiple Parishes by Mark Mogilka and Kate Wiskus. Perhaps one of these or a modification of one of them would be best for us.

**Parish A**

**Parish B**

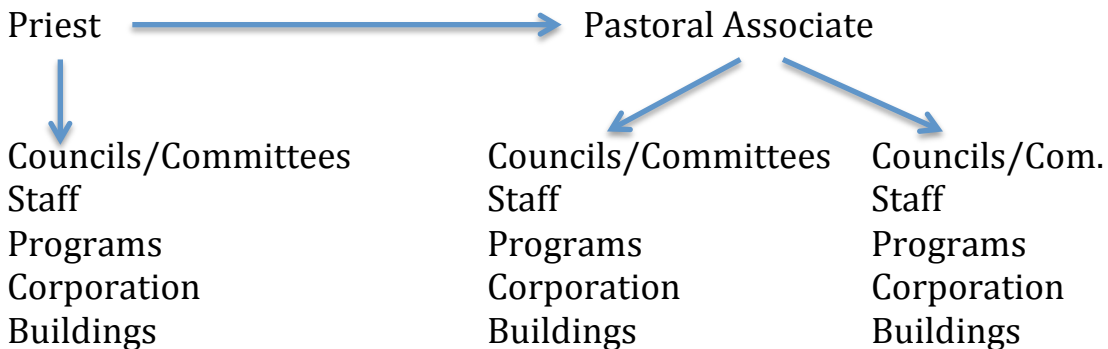
**Parish C**

## Model I: One Priest divide among three totally separate parishes



This is essentially where we are at now. Fr. Steve is divided 60% St. Anthony's, 30% St. Mary's and 10% Holy Family.

## Model II: Pastoral Associate with Three Parishes



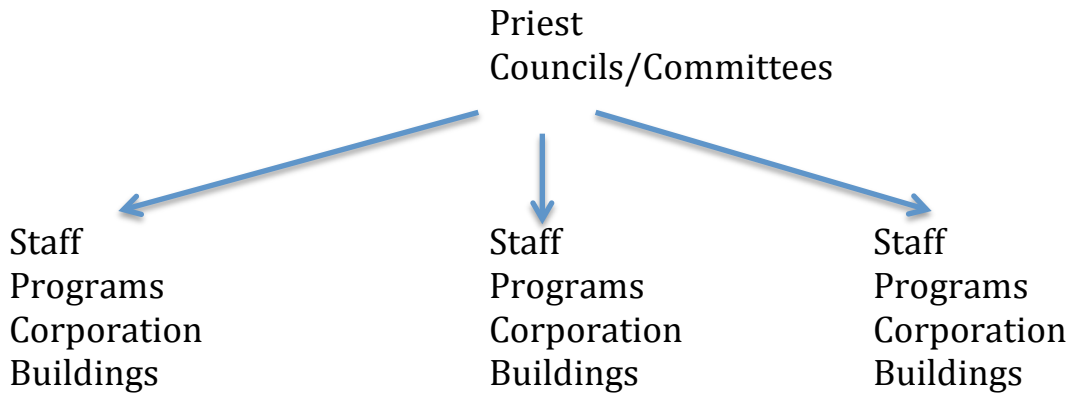
In our diocese at the present there are several parishes that have a Pastoral Associate like Sr. Catherine Kaiser providing leadership in a parish on a daily basis with a Priest in a neighboring parish providing sacramental ministry. Each parish would function independently.

**Parish A**

**Parish B**

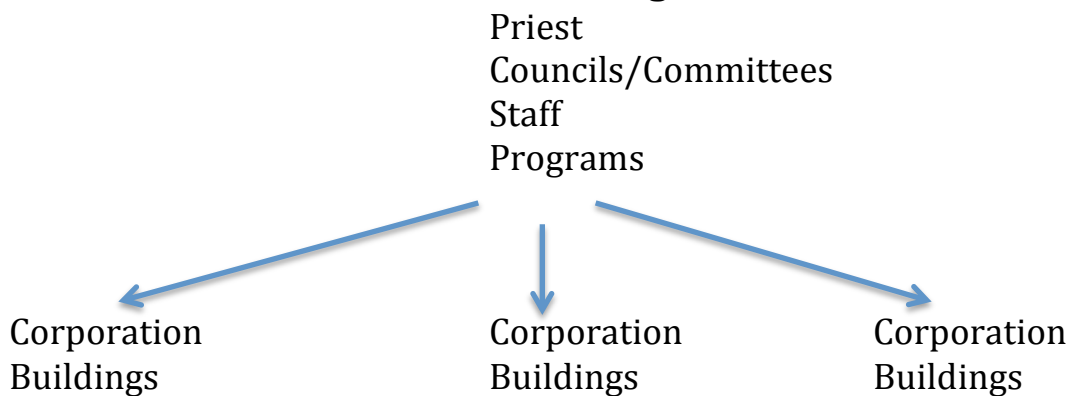
**Parish C**

**Model III: Combined Councils and Committees**



The value of this model would be keeping the number of meetings manageable for the priest. It would allow parishes to share experience and wisdom. It would grow community. Presently our Religious Education (CCD) leaders have all formed one Religious Education Committee for the three parishes.

**Model IV: Combined Staff & Programs with Three Parishes**

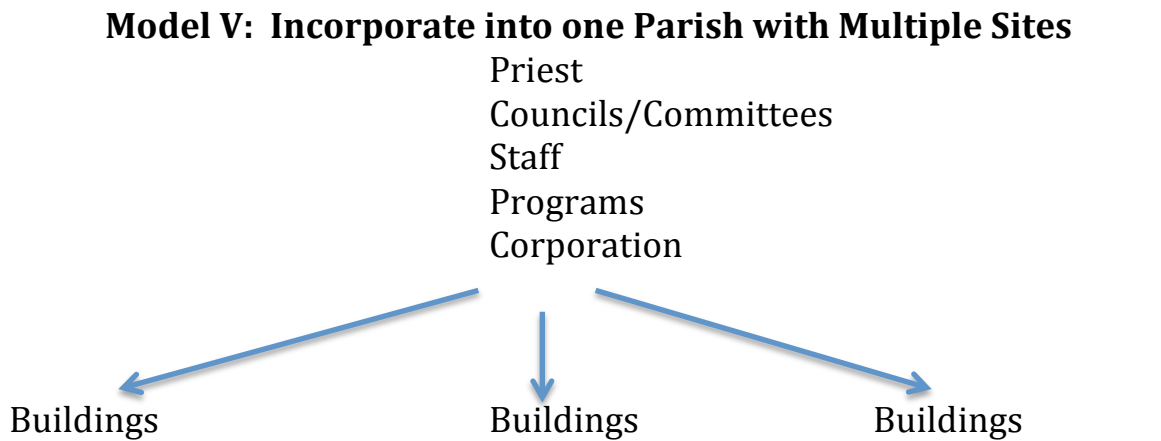


At present we have one secretary for all three parishes. To grow our ministries perhaps we would hire further staff. A Religious Education Coordinator, a Youth Minister, a Music & Liturgy Director or a Family Life Coordinator on either a part time or full time basis. In terms of combining programs, are there ways our schools could work more closely together, sharing a principal, music teacher, etc.

**Parish A**

**Parish B**

**Parish C**



In this model we would become one parish legally and financially yet maintain three separate worship sites as we presently have. This would put all of our financial resources into a common pot. It would vastly simplify the paper work presently involved in running three separate parishes.

**Model VI: One Parish One Worship Site**

Priest  
Councils/Committees  
Staff  
Programs  
Corporation  
Buildings

This model would only be appropriate if we no longer had enough members or financial resources to maintain three separate facilities.

# Response Form for Discussion on Options For Parish Vision Statement

Name \_\_\_\_\_ Parish \_\_\_\_\_

1. Of the models offered above, I basically think we should use:  
(please circle one)

Model I   Model II   Model III   Model IV   Model V   Model VI

2. What I like best about this Model is:

---

---

---

---

---

---

---

---

3. I would adapt it by:

---

---

---

---

---

---

---

---